

# The Stockbridge Theatre

## At

# Pinkerton Academy

Technical Information

Version: 2025

## **Facility Contact Information**

Physical Address: 44 North Main Street  
Derry, NH 03038

Shipping Address: 5 Pinkerton St  
Derry, NH 03038

Location: Stockbridge Theatre at Pinkerton Academy

Phone: 603.437.5210

## **Personnel**

Director of Stockbridge Theatre: Shannon Mayers  
603.437.5200 x5112  
[smayers@pinkertonacademy.org](mailto:smayers@pinkertonacademy.org)

Asst. Director of Stockbridge Theatre: Alyssa Gillin  
603.437.5200 x5122  
[agillin@pinkertonacademy.org](mailto:agillin@pinkertonacademy.org)

Technical Director: Colby Adams  
603.437.5200 x5142  
coadams@[pinkertonacademy.org](mailto:coadams@pinkertonacademy.org)

## **Stage**

Proscenium	20'H x 40'W x 31'6" to back wall
Backstage Width	104'
Wing Size	SL – 32'W x 31'6"D SR – 32'W x 31'6"D
Orchestra Pit	7'6"H x 48'W x 17'D
Apron	57'W x 12'D (Apron also serves as removable pit cover)
Height to Grid	36'
Floor	Stage – Stage Laminate (Flat Black) Apron – Oak Hardwood (Medium Oak finish)
Crossover	Hallway behind stage, open at all times
Access to House	Stairway and Ramp off of apron on Stage Left and Stage Right

## **Backstage Facilities**

### **Orchestra Pit**

Access: SR – Stairwell from wing

Other – Stairway directly to band room to the right of the theater

Pit cover removal is a labor intensive process which requires notification of facility staff at least 30 days prior to the event.

### **Loading Dock**

Location: In Scene Shop behind stage

Access: Overhead door, Straight shot to stage

Dock Height: 4'

Door Height: 14'

### **Dressing Rooms**

2 Large Dressing Rooms, can accommodate approx. 20 each

Location: Hallway Behind Stage

Facilities: Bathrooms, Access to Laundry, Iron, and Steamer, No Showers

Monitoring: Equipped with TV monitor without audio feed, no communications

### **Green Room**

1 Room, can accommodate small groups, approx. 10 people

Location: Hallway Behind Stage

Facilities: Bathroom with Shower, Sink, Refrigerator

Monitoring: Equipped with TV monitor without audio feed, no communications

## **Black Box Theatre**

Large room that can accommodate approx. 100 people.

Can be used as a rehearsal, reception, or performance space.

Location: Hallway Behind Stage

Equipment: Full A/V presentation with computer and DVD player

Lighting: 16 circuits shared with Main Stage

### **Chorus Classroom**

Large Classroom that can accommodate groups up to 50

Can be used as a rehearsal space, or meeting space

Location: Hallway to Right of Stage

Limitations: If used as dressing room, should be noted that there are exterior windows that should be covered.

Equipment: Grand Piano

### **Practice Rooms**

Small rooms adjacent to the Chorus classroom that can accommodate approx.. 5 people

Can be used as office space, small group meeting space, or practice space

Location: Adjacent to Chorus Classroom

Equipment: Some rooms are equipped with pianos

### **Truck & Bus Parking**

Limited parking is available for up to 5 trucks or busses

Note: Use of classrooms and Black Box MUST be approved by Facility Staff. Use requires a 30 day advance notice. Use of any equipment in rooms requires separate approval from the Facility Staff.

## **Rigging**

Number of Line Sets: 28  
Location of Fly Rail: Stage Right at Stage Level  
Loading Location: Stage Level or at grid  
Safe Working Load: 1000 lbs dead weight.  
Live Loads: This rigging system may NOT be used for hoisting humans.  
Live load systems MUST be inspected by Facility Technical Director prior to use.  
Length of Battens: 50'  
Access: Fly rail is at stage level in the SR wing. Grid can be accessed via a stairwell.

## **Soft Goods**

Main Curtain: Red traveler (dead hung)  
Main Border: Red Border/Valance (hung on Batten 1)  
Legs: 6 x Black Legs (hung on Battens 3, 7, 16, and 26)  
Traveler Curtain: 2 x Traveler Curtains (hung on Battens 12 and 23)  
Can be used as legs 3 and 5, or can function as FS black  
Borders: 4 x Black Borders (hung on Battens 6, 11, 15, and 20)  
Cyclorama: White, Seamless (hung on Batten 28)  
Scrim: Full size Black scrim available to hang on any empty batten

## **Misc. Technical**

Company Switch: Downstage Left  
Service: 1 – 200 amp 3Ø cam lock panel  
Shore Power: No Shore Power  
House Lights: 10 circuit Unison Dimmer Rack  
Controlled from various panels throughout house and stage areas, or through DMX Control (dimmers 193-201)  
Spotlights: 2 – Lycian Midget HP  
Location: Outside of Tech booth on Left and Right sides  
Distance to Plaster Line: 89'  
Communications: Clear-com Two-channel headset system  
All plugs are single channel. Can be accessed throughout space

## Lineset Schedule

Please refer to the plot attached

Set #	Distance US Of Plaster Line	Description
1	1' 0"	Main Valance
MR*	2' 0"	Main Rag
E1 <sup>+</sup>	3' 0"	1 <sup>st</sup> Electric (Winch #1)
2	4' 0"	Legs 1
3	5' 0"	Batten
4 <sup>@</sup>	6' 0"	Orchestra Cloud 1
5	7' 0"	1 <sup>st</sup> Border
6	8' 0"	Legs 2
E2 <sup>+</sup>	9' 0"	2 <sup>nd</sup> Electric (Winch #2)
7	10' 0"	Batten
8	11' 0"	Batten
9	12' 0"	2 <sup>nd</sup> Border
10 <sup>@</sup>	13' 0"	Midstage Traveler
E3 <sup>+</sup>	14' 0"	3 <sup>rd</sup> Electric (Winch #3)
11 <sup>@</sup>	16' 0"	Orchestra Cloud 2
12	17' 0"	3 <sup>rd</sup> Border
13	18' 0"	Legs
14	19' 0"	4 <sup>th</sup> Electric
15	20' 0"	Batten
16	21' 0"	Batten
17	22' 0"	Batten
18	23' 0"	Batten
19	24' 0"	4th Border
20 <sup>@</sup>	25' 0"	Upstage Traveler
21 <sup>@</sup>	26' 0"	5 <sup>th</sup> Electric
22	27' 0"	Batten
23	28' 0"	Batten
24	29' 0"	Batten
25	30' 0"	Cyclorama
26	31' 0"	Batten

\* Main Rag is dead hung and cannot be moved

+ 1<sup>st</sup>, 2<sup>nd</sup>, and 3<sup>rd</sup> Electrics are operated on Mechanical Winches controlled from the SR wing.

Cannot be moved

@ Orchestra Clouds, Travelers, and 5<sup>th</sup> Electric cannot be moved

## **Lighting**

ETC Theatrical Lighting Control System

182 Circuits Available (16 are shared between Theater and Black Box Space)

ETC Sensor Dimmer Rack – 96 x 2.4kW dimmers

ETC Nomad on a portable mini pc w/ CMD\_Key keyboard and touch screen monitor (Main Console)

ETC Ion Theatrical Lighting Console (Emergency Backup)

ETC RFR Radio Focus Remote

2 x Fader Wings (40 faders each)

2 x DMX universes

Intelligent Fixture Control

USB backup

Can import ASCII files from other ETC consoles

2 Standard Color Monitor

ETCNomad 1K

ETC Gadget II

IPad with ETC App

All Connectors are Bates Stagepin

1 <sup>st</sup> FOH Catwalk:	30 circuits on Fixed Connector Strip
2 <sup>nd</sup> FOH Catwalk:	30 circuits on Fixed Connector Strip
SL Box Boom:	6 circuits on Fixed Connector Strip
SR Box Boom:	6 circuits on Fixed Connector Strip
1 <sup>st</sup> Electric:	28 circuit on Fixed Connector Strip
1 <sup>st</sup> Orchestra Cloud:	5 circuit Drop Box SR, can be moved
2 <sup>nd</sup> Electric:	20 circuits on Fixed Connector Strip
3 <sup>rd</sup> Electric:	20 circuits on Fixed Connector Strip
4 <sup>th</sup> Electric:	2 x 5 circuit Drop Boxes (1 x SL, 1 x SR), can be moved
5 <sup>th</sup> Electric:	10 circuits on Fixed Connector Strip
Floor Circuits:	4 x 6 circuit wall plugs. Circuits are mirrored upstage and downstage A Total of 12 circuits available, 6 x SL, 6 x SR
Additional:	1 additional 5 circuit drop box is available if needed
Black Box:	16 circuits on plug boxes evenly spaced throughout lighting grid

#### Available Fixtures :

22 - ETC Source 4 19° Ellipsoidals  
18 - ETC Source 4 26° Ellipsoidals  
35 - ETC Source 4 36° Ellipsoidals  
12 - ETC Source 4 50° Ellipsoidals  
50 - ETC Source 4 Par  
27 - ETC Source 4 Parnel

20- Martin Rush Par 2 RGBW Zoom LED Pars  
10- ETC Colorsourc Spot V (8x50 degree and 2x19 degree) on Relay modules.  
10- ETC Colorsourc CYC  
4- Chauvet Intimidator Hybrid 251SR Moving Heads

6 – 10' Boom Pipes with bases  
Assortment of Barndoors, Tophats, Floor Bases, Two-fers

#### DMX Control system

DMX Output to Dimmer Rack from Tech Booth  
DMX Output to Various Locations from Tech Booth

- Stage Left
- Stage Right
- 1<sup>st</sup> Catwalk
- 2<sup>nd</sup> Catwalk
- SL Box Boom
- SR Box Boom

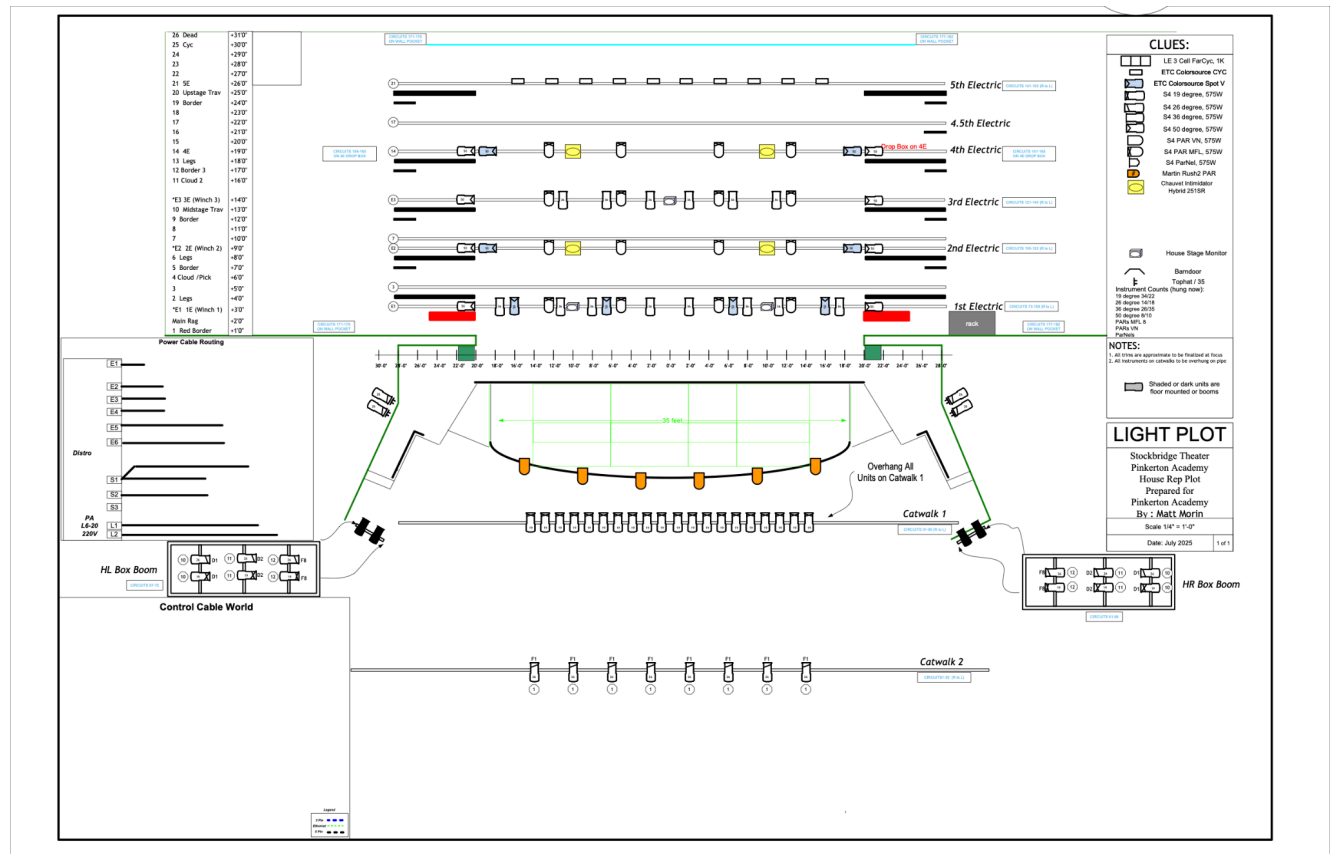
DMX Input from Various Locations in Tech Booth

- Center House
- Black Box

DMX can be patched from any of the inputs to any outputs in Tech Booth

Limited quantities and lengths of DMX are available. For extensive intelligent and LED light setup, DMX cable should be provided.

## Rep Plot



1 – 4E Circuits are located on 2 x 5 unit Movable Circuit Boxes. These circuit boxes must remain on 4<sup>th</sup> Electric to maintain Standard Rep Plot.

Any modifications to the lighting plot must be submitted at least 30 days prior to the event.

## **Sound**

FOH Console: Yamaha QL5 Digital Mixing Console with onboard Effects and EQ

FOH Speakers: 24 x Meyer Lina Compact Linear Array Speakers (12 on each side)

2 x Meyer 2100-LFC Subwoofers Flown Center

5 x Meyer UP-4 Slim Loudspeakers

2 x 810 Galaxy System Control Processor

which can be monitored and controlled remotely via Theater's tablet computer.

Distance to Plaster Line from Center of House: 42'

Distance to Plaster Line from Tech Booth: 89'

Snake: 44 input x 8 return XLR snake

Isolated Outputs: 2 x Monitor Split SL

Monitor Split SR

FOH Split at Center of House

FOH Split in Tech Booth

1 W4 whip which can be connected at Center of House or Booth

Yamaha 3224-D2 RIO in SL Wing

Microphones: 4 x QLXD Wireless microphones (4 x Handheld OR 4 x Bodypack)

Microphone Inventory including:

- 5 x Shure SM-57
- 7 x Shure SM-58
- 3 x Shure SM-81
- 4 x Shure SM-94
- 1 x Shure Beta 52A
- 2 x Shure Beta 56A
- 1 x Shure Beta 57A
- 1 x Shure Beta 58A
- 1 x Shure Beta 87A
- 3 x Crown PCC160
- 3 x Electro-Voice RE90H
- 2 x AKG C3000B
- 2 x Rode NT5 matched Pair
- 10 x AT Pro35 Mini Cardioid Condenser Instrument Mic

- 4 x Point Source Audio EO-8WL EMBRACE Omnidirectional Earmount Lavalier Microphone with TA4F X-Connector for Shure and Line 6 Wireless Transmitters (Beige)
- 16 x wireless Audio Technica body mics
- Mono and Stereo Direct Boxes

The following equipment may be rented for an additional cost.

7 x EAW Microwedge Monitors

EAW Microwedge Drum Subwoofer

Use of the equipment must be requested at least 30 days prior to the event.

## **Media**

Christie Digital Systems 4K13A-HS Projector with 2.0-4.0:1 Zoom H Lens

Mounted above Vom Center house

**CANNOT** project to Cyclorama at back of stage without some shadows visible

Audio/Visual Inputs for Computer on stage and in Tech Booth

## **INSTRUMENTS**

Instrument	Model	
<b>Amplifiers</b>		
Henrickson Jazz Guitar Amplifier	12R	New 2008
Hartke Jazz Bass Amplifier	HS 1200	New 2007
<b>Keyboard</b>		
Nord	Stage 3	New 2019
Yamaha 6'3 Acoustic Grand		New in 2002
<b>Drum Kit</b>		
Pearl Session Studio Drum Kit w Harware	STS925XSP/C314	New 2018
Zildjian K0924 15" K Light HiHat Cymbals		
Zildjian K1426 21" K Custom Special Dry Ride Cymbal		
Zildjian K0967 22" K Custom Dark Ride Cymbal		

Zildjian K0953 18" Crash Cymbal, K Custom, Dark		
Zildjian A0315 22" Swish Knocker Cymbal w 20 rivets		